

Mapping LGBTQ St. Louis
Additional Information Sheet

Location:

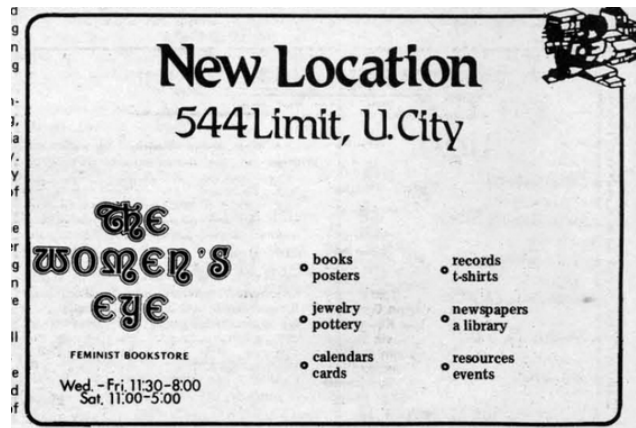
Women's Eye Bookstore
905 S. Yale Ave.
6344 S. Rosebury
554 Limit

Additional Information:

First location opened 5/14/1976 on Yale. Then moved to Rosebury location 1981 – 1982, and on Limit Ave from 1982 – 1988. Closed for financial reasons.

Non-profit store selling feminist books, also operated as defacto community center. Also hosted Tiamat Press, open women's rap [talk] groups, and IRIS organization.

First owned and operated by Chris Guerrero, Beverly White, Carolyn Walker, and Kathy Kane.



For additional history see:

Mannies, Jo. "Stresses Feminisms" *St. Louis Post-Dispatch* October 21, 1976. 62.

Advertisement. *The Gay News Telegraph*, March 1982. 2.

"Women's Eye Relocates" *The Gay News Telegraph*, March 1982. 4.

Women's Resource Center Records (WUA00114), Series 1: Resource Center Scrapbooks, Journals and Miscellaneous, University Archives, Washington University in St. Louis.

Mapping LGBTQ St. Louis is an interdisciplinary humanities project examining the intersections of gender, sexuality, race, class & society in the metropolitan area of St. Louis, Missouri. We welcome questions, comments, and feedback. [Please contact the project team using this online form.](#)